



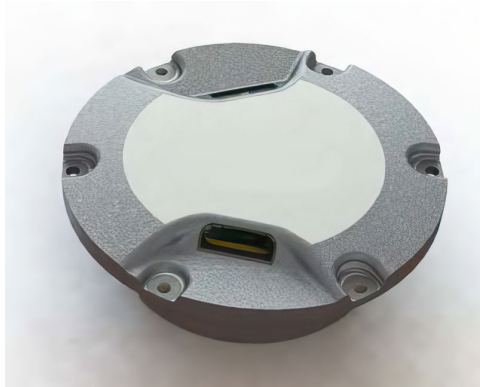
www.genesislamp.com  
 info@genesislamp.com  
 Toll Free: 800-685-5267

**GENESIS LAMP**

375 North St. Clair St.  
 Painesville, OH 44077

# L-852 J/K LED

## Style-3 Taxiway Centerline Light



### IN-PAVEMENT LIGHTS - 2.5

### ORDERING INFORMATION

**Order Number:**

L-852 X L X XX - X X G2

**Fixture Type:**

J = L-852J (Wide, CAT II)

K = L-852K (Wide, CAT II)

L = LED

**Arctic Kit:**

0 = No Arctic Kit

1 = Arctic Kit

**Color:**

GG = Green/Green

YY = Yellow/Yellow

GB = Green/Blank

YB = Yellow/Blank

**Options:**

0 = N/A

1 = Toe Right

2 = Toe Left

**Cable Options:**

1 = 1 I/O Cable & 1 PWA

2 = 2 I/O Cables & 2 PWAs\*

G2 = Generation 2

\* Available for bidirectional fixtures only

### COMPLIANCES

L-852J(L), L-852K(L)

FAA AC 150/5345-46 (current edition) FAA  
 Engineering Brief 67D

ETL Certified

Meets "Buy American" requirements.



### PRODUCT APPLICATION

The L-852 J/K LED Style-3 inset fixtures are used to delineate taxiway centerlines on curved sections.

L-852J: Taxiway centerline, Curved sections;  
 Clearance bar (≥1200 Runway Visual Range (RVR))

L-852K: Taxiway centerline, Curved sections;  
 Clearance bar (<1200 RVR)

### FEATURES

- High-powered LEDs with optically matched glass lenses.
- Easy to maintain. All renewal parts are field replaceable.
- Pressure test valve for seal integrity verification.
- LED life greater than 50,000 hours under high intensity conditions.
- Optional thermostatically controlled heater (Arctic Kit) that cycles on and off when temperature drops below freezing, reducing overall energy consumption.
- Seals tested to resist Cryotech XT350, EX180, and E36 de-icing fluids.

### ACCESSORIES

Description	Part Number
L-868B Base Can, 24" Deep	AC2424-2Q2-00303
L-823 Primary Connector Kit (8 AWG, .320"/.430")	11174-01
L-823 Complete Kit (8 AWG, .320"/.430")	11805-01
Heat Shrink Tubing Kit	A2-20-0089-001
Flange Ring, 3/4"	AF540212Y

**L-852J TRANSFORMER REQUIREMENTS**

L-852J Type	Series Circuit	Fixture Load <sup>1</sup>	Required Transformer	Part Number
L-852J Uni	6.6A, 60Hz	7.1VA	L-830-16 (10/15W)	11717
No Arctic Kit	6.6A, 50Hz	7.1VA	L-831-16 (10/15W)	11732
L-852J Bi	6.6A, 60Hz	12.9VA	L-830-1 (30/45W)	11680
No Arctic Kit <sup>2</sup>	6.6A, 50Hz	12.9VA	L-831-1 (30/45W)	11710
L-852J Uni	6.6A, 60Hz	7.1VA	L-830-1 (30/45W)	11680
With Arctic Kit	6.6A, 50Hz	7.1VA	L-831-1 (30/45W)	11710
L-852J Bi	6.6A, 60Hz	12.9VA	L-830-4 (65W)	11683
With Arctic Kit <sup>2</sup>	6.6A, 50Hz	12.9VA	L-831-4 (65W)	11683

<sup>1</sup> The fixture load varies depending on the color(s). Does not include isolation-transformer load.

<sup>2</sup> For a bidirectional dual-plug fixture use the transformer required for a unidirectional fixture shown above (with or without the Arctic Kit) for each plug.

**L-852K TRANSFORMER REQUIREMENTS**

L-852K Type	Series Circuit	Fixture Load <sup>1</sup>	Required Transformer	Part Number
L-852K Uni	6.6A, 60Hz	8.7VA	L-830-16 (10/15W)	11717
No Arctic Kit	6.6A, 50Hz	8.7VA	L-831-16 (10/15W)	11732
L-852K Bi	6.6A, 60Hz	14.9VA	L-830-1 (30/45W)	11680
No Arctic Kit <sup>2</sup>	6.6A, 50Hz	14.9VA	L-831-1 (30/45W)	11710
L-852K Uni	6.6A, 60Hz	8.7VA	L-830-1 (30/45W)	11680
With Arctic Kit	6.6A, 50Hz	8.7VA	L-831-1 (30/45W)	11710
L-852K Bi	6.6A, 60Hz	14.9VA	L-830-4 (65W)	11683
With Arctic Kit <sup>2</sup>	6.6A, 50Hz	14.9VA	L-831-4 (65W)	11683

<sup>1</sup> The fixture load varies depending on the color(s). Does not include isolation-transformer load.

<sup>2</sup> For a bidirectional dual-plug fixture use the transformer required for a unidirectional fixture shown above (with or without the Arctic Kit) for each plug.

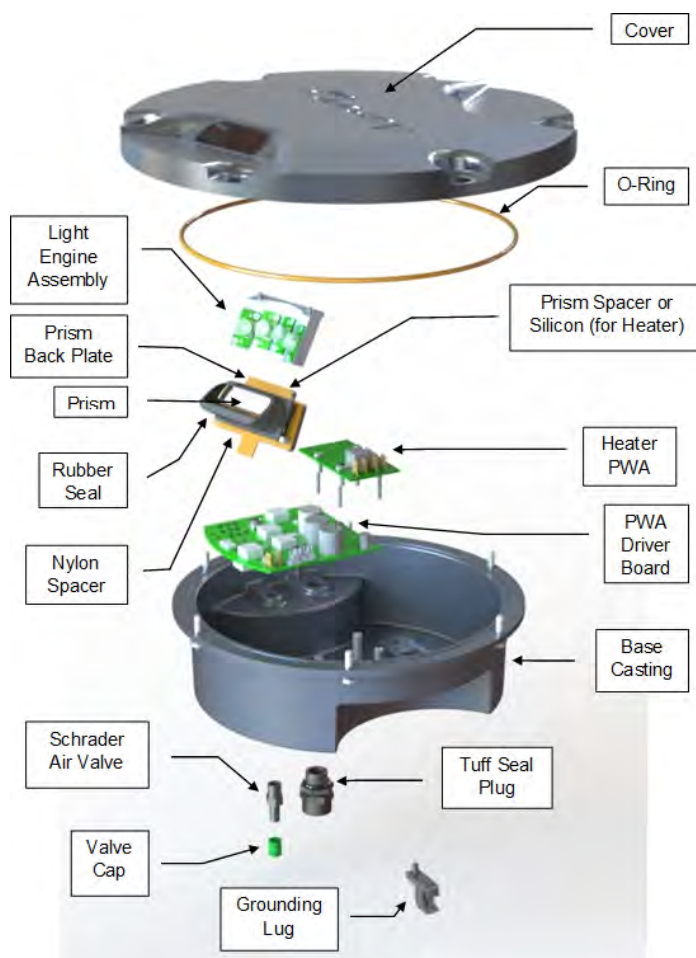
## RENEWAL PARTS

Used On	Description	Part Number
J, K	Air Schrader Valve, 1/8 (12)	A1-05-0553-001
J, K	Cable Replacement Kit – Includes cable, tuff seal 2-hole, connectors	K1-02-0003-001
J, K	Prism Replacement Kit, UniBi – Includes prism, prism seal, spacer, retention plate, and O-Ring	K1-02-0029-001
J, K	Light Engine Replacement Kit, UniBi – Includes light engine assembly and O-Ring for each color	
	The kit part numbers are listed below:	
J	Yellow	K1-02-0019-006
J	Green	K1-02-0019-007
K	Yellow	K1-02-0019-008
K	Green	K1-02-0019-009
J, K	Heater Replacement Kit for Single Heater	K1-02-0016-001
J, K	Heater Replacement Kit for Dual Heater	K1-02-0016-002
J, K	Driver Board Replacement Kit, UniBi – Includes PWA Driver Board and O-Ring	K1-02-0028-002
J, K	Grounding Lug Replacement Kit	K2-02-0005-001

## WEIGHT AND DIMENSIONS

Weight:	TBD
Dimensions:	
Height	TBD
Outer Diameter	TBD
Bolt-Circle Diameter	TBD

## EXPLODED VIEW



GENESIS LAMP

www.genesislamp.com  
info@genesislamp.com  
Toll Free: 800-685-5267