

# Airport Lighting Products



Genesis Lamp Corporation is your source for airport lighting systems  
including airport light bulbs, lighting fixtures and hardware.



**GENESIS LAMP**  
[www.genesislamp.com](http://www.genesislamp.com)

800-685-5267

2020

Airport Lighting

Genesis Lamp is an Ohio-based supplier of airport light bulbs and lighting systems. Our manufacturing and distribution capabilities allow us to supply virtually every type of airport lamp in any volume required.

Genesis Lamp is a leading distributor of aviation, and obstruction lighting products from Honeywell, Osram/ Sylvania, Hughey & Phillips LLC, Crouse-Hinds, ADB Airfield Solutions and ATG Airports.

Fixtures & Hardware

We are a major distributor of L-861 and L-862 fixtures and parts. You can count on us for all of your lighting needs, including extended life bulbs, glass lenses, sockets for incandescent T10 lamps, sockets for quartz 2 pin pre-focus lamps, cord sets, couplers or risers.

Because Genesis Lamp is built on such strong technical capabilities, our company is the largest supplier of high-quality flash lamps to the Federal Aviation Administration and the US Department of Transportation. We also provide lighting to the US Navy and the US Air Force.

Genesis Lamp is your source for:

- Replacement Bulbs
- In Pavement Lighting
- Elevated Lighting
- Approach Lighting
- Windsocks & Cones
- Power Equipment
- Guidance Signs
- Cables & Connectors
- Navigational Aids
- Base Plates & Cans

The Genesis Lamp Mission For Over 30 Years

Here at Genesis Lamp, we are committed to continuing our 30 year tradition of providing our customers with the most courteous, efficient and professional service we can give. We give all of our customers that outstanding service, regardless of whether they are purchasing a huge order or a single replacement bulb. No matter what you need, we want to be there to fulfill all of your state-of-the-art lighting product needs.

Contact Ed Zukowski or Frank Laszlo with any questions or to order airport lighting products.

Ed@genesislamp.com • Frank@genesislamp.com

Genesis Lamp

PathFinder L-861 Airport Elevated Runway Light



The combination of our affordable fixture, EXM extended life bulbs, low energy use and low maintenance requirements makes this the most versatile and economical fixture in the industry.

- Meets FAA specifications (certification pending)
- Available with choice of lamps. Quartz or incandescent - 30W or 45W.
- Weatherproof clamp and gasket for easy lamp changes.
- Replaceable components

PathFinder L-861 T (LED)



FAA Approved Elevated Taxiway Light

The Pathfinder L-861 T (LED) is used as an elevated light fixture for airport taxiway edge light powered by a constant current regulator (CCR) with 3 step brightness.

- Long Life LED source, 100,000 hours resulting in less maintenance

Replacement parts  
M50-61 Blue Lens  
M150-3L Gasket  
M40-1 Ring Clamp

Avlite® Solar Airfield Lights



AV-70 & AV-70-HI Solar Aviation Light



AV-425-RF Radio-Controlled Solar Aviation Light



AV-60 Solar Aviation Light

Call for pricing



AV-15 Solar Aviation Light



Airport Lighting

A. Quartz Halogen Beacon Bulb - Uses : Beacon Call for Pricing

PRODUCT	SKU#	WATTS
1M / T7BP	AL-002-0001	1000 w

B. PAR 64 Bulbs - Uses : Beacon

PRODUCT	SKU#	WATTS
500 PAR 64/NSP		120v/500w
Q1000 PAR 64/NSP		120v/1000w

C. Metal Halide Bulbs

PRODUCT/SKU#	BASE TYPE	BULB	WATTS
M1000U	Mog. Base	BT56	1000w
M175U	Mog. Base	BT28	175w
M250U	Mog. Base	BT28	250w
M400U	Mog. Base	BT37	400w
M175/U/MED	Med Base	E17	175w
UHI-S150DM/A/UVP/4200K	G12 Base		150w

D. Halogen Pre-Focus Lamps - Uses: In Pavement Runway Bulbs

30 Watt In Pavement Runway Bulbs \*F = Fused

PRODUCT	SKU#	WATTS
48-054-F	AL-003-0006	30w/6.6A
48-054	AL-003-0007	30w/6.6A

32 Watt In Pavement Runway Bulbs

20521-F	AL-003-0008	32w/6.6A
20521	AL-003-0009	32w/6.6A

45 Watt In Pavement Runway Bulbs

GN464	AL-003-0010	6.6A/45w
GN464-F	AL-003-0011	6.6A/45w
GN156	AL-003-0012	6.6A/45w
GN156-F	AL-003-0013	6.6A/45w

65 Watt In Pavement Runway Bulbs

GN173	AL-003-0016	6.6A/65w
GN173-F	AL-003-0014	6.6A/65w
GN484	AL-003-0017	6.6A/65w
GN484-F	AL-003-0015	6.6A/65w

100 Watt In Pavement Runway Bulbs

GN231	AL-003-0002	100w/6.6A
-------	-------------	-----------

125 Watt In Pavement Runway Bulbs

GN041-2S	AL-003-0003	125w/6.6A
----------	-------------	-----------

200 Watt In Pavement Runway Bulbs

GN-251	AL-003-0004	200w/6.6A
GN041-IS	AL-003-0005	200w/6.6A

E. Halogen Pre-Focus - Uses: Threshold Light Bulbs

PRODUCT	SKU#	WATTS
GN-703 Fem	AL-004-0018	500 w
GN-703 Male	AL-004-0019	500 w

F. Bi-Pin Light Bulbs

PRODUCT	SKU#	WATTS
GY8/100	AL-005-0024	100watt

G. Par 38 Bulbs - Uses: Elevated Approach Lighting

PRODUCT	SKU#	WATTS
par38	AL-006-0024	100w/120v
par38	AL-006-0025	120w/130v
par38	AL-006-0026	120w/120v
par38	AL-006-0027	150w/120v
par38	AL-006-0028 flood	150w/130v
par38	AL-006-0028 spot	150w/130v
par38	AL-006-0030	6.6a/45w
par38	AL-006-0031	75w/120v
par38	AL-006-0032	90w/120v



A. Quartz Halogen Bulbs

C. Metal Halide Bulbs



B. Par 64 Bulbs



D. Runway Centerline Bulbs



Fused



No Fuse



E. Threshold Light Bulbs



F. Bi-Pin Light Bulbs



G. Elevated Approach Lighting



## Airport Lighting

### G. Elevated Approach Lighting Cont'd

PRODUCT	SKU#	WATTS
12.5v/250w/PAR56	AL-006-0033	250w
300/PAR56/MFL	AL-006-0034	300w
300/PAR56/WFL	AL-006-0035	300w
300/PAR56/NSP	AL-006-0036	300w
6.6A/PAR56/2	AL-006-0037	200w
6.6A/PAR56/3	AL-006-0038	200w
6.6A/PAR56/4	AL-006-0039	200w
6.6A/PAR56/5	AL-006-0040	45w
GN34-FT	AL-006-0041	120w
GN34-4	AL-006-0042	120w
GN-34	AL-006-0043	120w
Q20A/PAR56/1/C	AL-006-0044	500w
Q20A/PAR56/2	AL-006-0045	500w
Q20A/PAR56/3	AL-006-0046	500w
Q20A/PAR56/C	AL-006-0047	300w
500/PAR56/WFL	AL-006-0048	500w
500/PAR56/MFL	AL-006-0049	500w
500/PAR56/NSP	AL-006-0050	500w
500/PAR64/MFL	AL-006-0051	500w
500/PAR64/NSP	AL-006-0052	500w
500/PAR64/WFL	AL-006-0053	500w
1000/PAR64/NSP	AL-006-0054	1000w
Q6.6A/PAR64/2P	AL-006-0055	200w
Q6.6A/PAR64/3P	AL-006-0056	300w

### H. Elevated Edge Lights

PRODUCT	SKU#	WATTS
GNQ	AL-007-0057	12v/20w
20531	AL-007-0058	200w
G6.35	AL-007-0059	6.6A 100w
2PPF	AL-007-0060	6.6A 175w
G6.35	AL-007-0061	6.6A 200w
G6.35	AL-007-0062	6.6A 45w
EGG	AL-007-0064	120v/750w
EVV	AL-007-0067	120w
EWR	AL-007-0068	150w
EXL	AL-007-0069	30w
EXM	AL-007-0070	45w
EXM-LL	AL-007-0070L	30w
EZL	AL-007-0071	200w
EXL-LL	AL-007-0072	30w
Q200	AL-007-0073	T4CL1000hr

### I. Inset In pavement Lighting

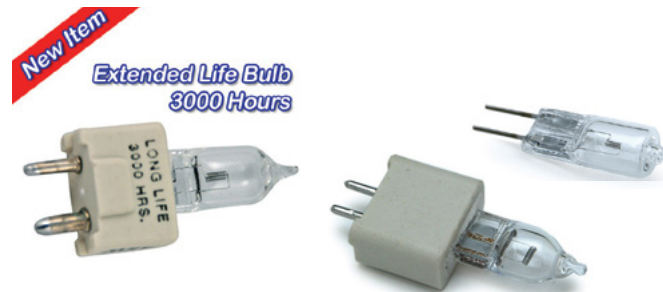
PRODUCT	SKU#	WATTS
DCR	AL-008-0077	6.6A 45w
DCR	AL-008-0074	6.6A 115w
DCR	AL-008-0075	6.6A 185w
DCR	AL-008-0076	6.6A 200w

### J. Low & Medium Intensity Runway Lights

PRODUCT	SKU#	WATTS
A 19	AL-009-0078	25w/120v Clr
A 19	AL-009-0079	25w/130v Clr
A 19	AL-009-0080	40w/120v Clr
A 19	AL-009-0081	40w/130v Clr
A 19	AL-009-0082	60w/130v Clr
A 21	AL-009-0083	100w/130v
A 21	AL-009-0087	50w/30v frst
A 21	AL-009-0089	60w/120v
A 21	AL-009-0090	60w/130v
A 21	AL-009-0091	60w/230v



G. Elevated Approach Lighting



H. Elevated Edge Lights



I. Inset In pavement Lighting



J. Low & Medium Intensity Runway Lights

Airport Beacon Bulbs PS/40 Bulb

### Airport, Traffic, Obstruction Bulbs

PRODUCT	SKU#	WATTS
PS 40	AL-009-0094	620w/120v
PS 40	AL-009-0095	620w/130v
PS 40	AL-009-0620	700w/120v
PS 40	AL-009-0700	700w/220v
A 21	AL-009-0085	116w/130v
A 21	AL-009-0086	116w/230v
A 21	AL-009-0092	69w/120v
A 21	AL-009-0093	69w/130v

## Airport Lighting

### K. MR 16 Bulbs - Common Uses: Inset Fixture, Signs

PRODUCT	TERMINALS	SKU#
<b>6.6A/30 Watt Bulbs</b>		
GN31F	Female	AL-010-0101
GN31MF	Male, Female	AL-010-0102
EZA	2-Pin	AL-010-0103
EZA-4	Female	AL-010-0104
<b>6.6A/32 Watt Bulbs</b>		
GN127	Flag	AL-010-0105
<b>6.6A/45 Watt Bulbs</b>		
GN45F	Female	AL-010-0106
GN45M	Male	AL-010-0108
GN45RF	Round, Female	AL-010-0109
EZC	2-Pin	AL-010-0110

<b>6.6A/48 Watt Bulbs</b>		
GN37MF	Male, Female	AL-010-0112
GN37F	Female	AL-010-0113
GN37M	Male	AL-010-0114
GN37RF	Round, Female	AL-010-0115
GN116	Flag	AL-010-0118

<b>12v/50 Watt Bulbs</b>		
EXT	2-Pin	AL-010-0117
EXN	2-Pin	AL-010-0122

<b>6.6A/62 Watt Bulbs</b>		
GN624	12" Female	AL-010-0188
GN169	Flag	AL-010-0189
GN590	2-Pin	AL-010-0119
GN934	15" Female	AL-010-0120

<b>12v/75 Watt Bulbs</b>		
EYC	2-Pin	AL-010-0121

<b>6.6A/105 Watt Bulbs</b>		
GN128	Flag	AL-010-0095
GN39F	Female	AL-010-0096
GN39M	Male	AL-010-0097
GN39RF	Round, Female	AL-010-0098

<b>6.6A/150 Watt Bulbs</b>		
GN710	15" Female	AL-010-0100

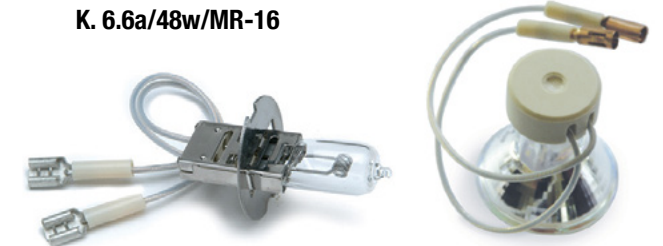
### M. Xenon Strobes - Uses: Approach, Runway End Identification Bulbs FT = Flash Technology

PRODUCT	SKU#
GN33Q	AL-012-0137
GN35Q	AL-012-0138
GN34	AL-012-0143
GN34FT	AL-006-0041
GN34-4	AL-012-0142
GN-52FB	AL-012-0039
GN-54DSB	AL-012-0040
GN73	AL-012-0041
GN76FT	AL-012-0076
GN80	AL-012-0044
GN81U	AL-012-0043



K. 6.6a/48w/MR-16

K. 6.6a/48w/MR-16



L. PK30d Bulbs

MR 11 Bulbs

### L. PK30d Bulbs - Common Uses: PAPI, Guard Light, Elevated H.I.

PRODUCT	SKU#	WATTS
<b>45 Watt Bulbs</b>		
PK30d	AL-011-0130	6.6A-M/32mm
PK30d	AL-011-0132	6.6A-F/32mm
PK30d	AL-011-0133	6.6A-F/28mm
PK30d	AL-011-0134	6.6A-M/28mm

<b>65 Watt Bulbs</b>		
PK30d	AL-011-0135	6.6A Fem
PK30d	AL-011-0136	6.6A Male

<b>100 Watt Bulbs</b>		
PK30d	AL-011-0123	6.6A Fem
PK30d	AL-011-0124	6.6A Male

<b>150 Watt Bulbs</b>		
PK30d	AL-011-0126	6.6A Fem
PK30d	AL-011-0127	6.6A Male

<b>200 Watt Bulbs</b>		
PK30d	AL-011-0129	6.6A Fem
PK30d	AL-011-0128	6.6A Male

### N. Taxiway Edge Identification Bulbs



### N. T-Shape Incandescent Bulbs - Uses: Taxiway Edge Identification

PRODUCT	SKU#	WATTS
T8	AL-013-0142	6.6A/30w
T8	AL-013-0143	6.6A/45w
T 10	AL-013-0144	120v/40w
T 10/P	AL-013-0145	6.6A/30w
T 10/P	AL-011-0146	6.6A/45w
T 14/P	AL-011-0149	6.6A/200w
T 14/2P	AL-011-0147	6.6A/204w



Cables & Connectors

L823 Connectors L823 Primary Connector Kits

Style 3 & 10		Item #
D4/D4	8 AWG	AL-140-0200
D3/D3	6 AWG	AL-140-0201

L823 Fixture Leads

Style 1 - 2 single wires - 16 AWG	AL-140-0202
-----------------------------------	-------------

L823 Secondary Connector Kits

Style 4	Plug, two wires	P/N 90P
Style 11	Receptacle, two wires	P/N 90R
Style 5	Plug, two conductor cable	P/N 91P
Style 12	Receptacle, two conductor cable	P/N 91R

L823 Secondary Extension Cords - 6 ft.

Style 1 & 7	12-AWG cable	11326-03
Style 1 & 8	12-AWG cable	11339-03

Heat Shrink Kit

NEW! - L-823 Complete Kit Primary Connector Kits -- Style 3 & Style 10

Part #: 11805-Series

Description: Each primary connector kit includes:

- Style 3 male pin
- Style 10 female receptacle
- Style 3 male housing
- Style 10 male housing
- Instruction sheet
- Paper wipe for cleaning

Airport Lighting Cable  
FAA L-824 Type C 5000 Volts Unshielded 90°

Suitable for installation in conduit, ducts or direct burial, for use in airport lighting circuits and control circuits.



Primary Connector Kits are used to install Isolation Transformers into series circuits, and to make serviceable splice connections or test points in L-824 Airport Lighting Cable on primary power circuits.



Primary Connector Kit



Heat Shrink



Fixture Leads

Secondary Connector Kit



NEW! - L-823 Complete Kit

Runway and Taxiway Lenses  
L-861 Glass Replacement Lenses

Yellow/Clear

L861-D-Y/C

Yellow

L861-D-Y

Blue

L861-D-B

Blue/Red

L861-D-B/R

Clear

L861-D-CL

Clear/Red

L861-D-CL/R

Green

L861-D-G

Green/Red

L861-D-G/R

Obscure/Green

L861-D-O/G

Red

L861-D-R



L-862 Glass Replacement Lenses

180 Degree Inner Lenses

L862-IL-YEL

L862-IL-BL

L862-IL-C

L862-IL-GR

L862-IL-R

Yellow

Blue

Clear

Green

Red

Outer Lenses

L862-OL-C

L862-OL-RG

L862-OL-GR

Clear

Red/Green

Green/Red



Windsocks & Cones

Windsocks

18" x 96" Orange nylon windsock AL-140-0060

36" X 12' Orange nylon windsock AL-140-0061

18" X 5' Orange nylon windsock AL-140-0062

24" X 8' Orange nylon windsock AL-140-0063

L-806 Wind Cone - L806 (external lit) Wind cone

Call for current pricing on windsocks, cones and lenses



Elevated Fixtures

PathFinder L-861 Medium Intensity - Elevated Taxiway and Runway Edge Light



HOW TO ORDER: A complete fixture assembly will consist of separate order items for the L-861 Assembly. Taxiway edge lights are usually blue (B); Threshold lights are usually green/red (GR). Example: GN-861-B-45H-14 is a 14 inch high fixture with a blue lens and a 45 watt halogen lamp.

G N 8 6 1 - - - - -

Fixture Type:

GN 861

Lens Color:

C = Clear

Y = Yellow G = Green

R = Red B = Blue

For split options use two lens colors.

Lamp Type, Power

30T = 30 watt, T10/IP

45T = 45 watt, T10/P

30H = 30 watt Halogen EXL

45H = 45 watt Halogen EXM

Overall Height

14 = 14 inches (standard height)

24 = 24 Inches

30 = 30 Inches

FAA L-862 High Intensity - Elevated Runway Edge Light

L-862 Fixture is supplied with a clear outer lens. Lens color options indicate inner lens colors.

G N 8 6 2 - - - - -

Fixture Type:

GN 862

Lens Color:

C = Clear

Y = Yellow G = Green

R = Red B = Blue

Lamp Type, Power

45 = 45 watt / EXM

120 = 120 watt / EVV

150 = 150 watt / EWR

200 = 200 watt / EZL

Overall Height

14 = 14 inches (standard height)

24 = 24 Inches

30 = 30 Inches

L-862E High Intensity elevated runway threshold & end of runway light.

G N 8 6 2 E - - - - -

Fixture Type:

GN 862E

R

G

Left Toe-in

R

G

Right Toe-in

Lens Color:

GR = Green/Red Left Toe-in Green

RG = Red/Green Right Toe-in Green

Lamp Type, Power

150 = 150 watt / EWR

200 = 200 watt / EZL

Overall Height

14 = 14 inches

24 = 24 Inches

30 = 30 Inches

L 861 Fixture & Replacement Parts

Description

L-861 Entire fixture (create part number above)

5-1/2" riser for 14" fixture

15-1/2" riser for 24" fixture

21-1/2" riser for 30" fixture

Clamp band-stainless steel

Flat gasket

O-ring seal

Frangible metal coupling 1.5"

Frangible metal coupling 2"

Socket, quartz w/bracket

Socket, for T-10 prefocus lamp

Halogen lamp socket

30 in. Stake-mount

Cord set for 14"- 31" fixture

Heat Shrink Kit

L867 Base Plates 12" x 1.5" Hub

12" x 2" Hub

Item #

AL-110-0001

AL-110-0002

AL-110-0003

AL-110-0004

AL-110-0005

AL-110-0006

AL-110-0007

AL-110-0008

AL-110-0013

AL-110-0016

AL-110-0017

AL-110-0018

AL-110-0011

AL-110-0021

AL-110-0019

AL-110-0020

Call for pricing

Light Bulbs

Description

EXL AL-007-0069 30w

EXM AL-007-0070 45w

EVV AL-007-0067 120w

EWR AL-007-0068 150w

EZL AL-007-0071 200w

T 10/1P AL-013-0145 6.6A/30w

T 10/P AL-011-0146 6.6A/45w

L 862 Fixture & Replacement Parts

Description

L-862 Entire Fixture

L-862 Clamp band

L-862 Lens gasket

L-862 Socket

L-862 Socket Mounting Plate

L-862 Inner Lens (see back cover for all colors)

L-862 Inner Lens Bracket

L-862 Lens, Inner Spring Clip

L-862 Outer Lens

Item #

(create part number above)

AL-120-0060

AL-120-0061

AL-120-0017

AL-120-0071

AL-120-0068

AL-120-0070

Call for pricing



# Fixtures & Hardware

Genesis Lamp offers these and a full array of other airfield lighting products. Whether you're looking for replacement light bulbs for airfield lighting or related products like airport beacons base plates, mounting stakes, transformer bases and windsocks, we have what you need.

## L-801A Airport Rotating Beacon - HBM 150/2

Compliance with Standards:  
 FAA: L-801 A/C150/5345-12  
 ICAO: Annex 14, para 5.3.3

**Applications**

The L-801A Airport Rotating Beacon is used primarily for night operations at airports as an identification and location marker. The dual-light beacon (clear and aviation green lenses) features 150-watt pulse-start lamps and a patented design that makes it maintenance free, except for lamp replacement.



Beacon Tipdown Pole



## Airport Light Bases and Transformer Housings



## L-867 CORTEN BASE PLATE

Shipped with gasket and hardware

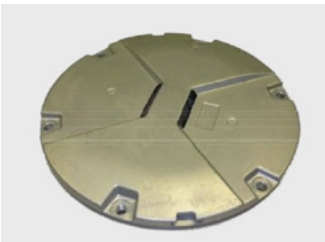


## Mounting Stake

Mounting stake is placed into the ground to provide a stable base for elevated lights.



## L-852 LED Inset Light Taxiway Centerline, Stop Bar, Holding Position Light



## L-850A LED Inset Runway Centerline, Rapid Exit Taxiway Indicator, Status, Takeoff Hold or Intersection Light



### APPLICATIONS

Runway centerline for FAA & ICAO CAT I, II and III and military runways, L850-T RWSL, THL and RIL for FAA, R.E.T.I.L. for ICAO and FAA LAHSO (L-850A) applications.

## LED Inset Runway Guard Light L-852G(L) Runway Guard Light for FAA, ICAO CAT I,II and III and military taxiways



## M4 SCARE-AWAY Bird Control Cannon



## Inset Runway Edge Light Taxiway centreline, stopbar and intermediate holding positions



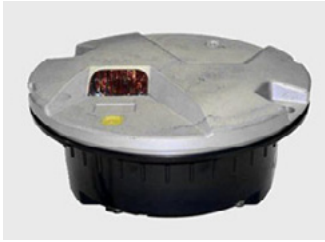
## E-2952/E-2968 Incandescent High or Medium Intensity Approach, Threshold or End Light



### APPLICATIONS

MFL is a multi-function light, which is generally used for approach centreline, crossbars and side rows lighting.

## Inset Runway Guard Light L-852G Runway Guard Light for ICAO CAT I,II and III, FAA and military taxiways



## 8ft x 60ft Runway "X" YELLOW Closure Marker w/ 6" BLACK Border



# Airfield Guidance Signs

AGM airport guidance signs are known for their structural and electrical performance.

### L-858 LED signs

- Use 80% less power than traditional lamps
- Long-lasting, energy-efficient LEDs
- Crisp, clean light with minimal bloom or ground splash makes them easier to acquire and read
- Available in FAA types Y, L, R & B  
 Certified to FAA AC 15/5345-44 (Current Edition)  
 Also available in halogen and incandescent

Call for details and pricing.

# Reflective Markers

## 650 L-853 AIRPORT MARKERS

Anchor: Ground Mount  
 Colors: White, Blue, Yellow, Orange, Green, and Red  
 Approved Height 14", 19", 24", 30" Above Ground  
 \*Note: 19", 24", 30" versions to be used in white runway edge and blue taxiway edge applications only.  
 Sheeting: Hi Intensity Reflective

## A750 (L-853) SERIES

Anchor: Surface Mount  
 Colors: White, Blue, Yellow, Orange, Green, and Red  
 Approved Height: 14", 19", 24", 30" Above Ground  
 \*Note: 19", 24", 30" versions to be used in white runway edge and blue taxiway edge applications only.  
 Sheeting: Hi Intensity Reflective

Call for details and pricing.

# Accessories

L-862 Runway Edge Frangible Coupling, Outside Bottom Thread 2"	GN-0605
L-849 REIL Coupling	GN-62B0064
For 1" diameter riser, 1.5" thread for 1935 baseplate	
Frangible Coupling, 2" Thread	GN-961AT
For 1" diameter riser, 2" thread for 1932 baseplate	
1.5" Frangible Metal Coupling for 1" dia. Riser, 1.5" Thread for 1935 Baseplate or AW2205 Mounting Stake	GN-0063
L-862 Runway Edge (2-inch Column)	GN-62B0605
L-849 REIL	GN-62B0064
L858 (Triangle Shaped) Sign	GN-62B0580-X
Flange: Sig. Series Sign	GN-62A2142
Flange: Sign PAPI, REIL	GN-62B0107-2

## LED Guidance Signs



## 650 L-853 AIRPORT MARKERS

Ground Mount



A750 (L-853) SERIES  
 Surface Mount



## Frangible Couplings



GN-0605



GN-961



GN-961AT



GN-0063



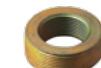
GN-62B0580-X



Coupling  
 GN-62B0107-2



GN-G2B0286



GN-10701984  
 2 in. to 1 in. adapter



Flange GN-62A2142



GN-62B0064



Power Equipment

Series Isolation Transformers

Approved in accordance with FAA circular 150/5345-47 and certified to FAA L-830 and L-831, these series isolation transformers are used for isolating high operating voltages, and are able to operate at 50 or 60 Hertz frequencies. In addition, they can operate safely while submerged in water.



FAA Designation	Wattage	Pri./Sec. Amps	Item Number	Weight (lbs)	Call for Pricing
L830-16 LED	10-15w	6.6a / 6.6a	AL-130-0039	3.6 lbs	
L830-17 LED	20-25w	6.6a / 6.6a	AL-130-0038	3.6 lbs	
L830-1	30-45w	6.6a / 6.6a	AL-130-0041	4.2 lbs	
L830-2	30-45w	20a / 6.6a	AL-130-0040	4.2 lbs	
L830-3	65 w	6.6a / 6.6a	AL-130-0042	4.5 lbs	
L830-4	100w	6.6a / 6.6a	AL-130-0043	8.5 lbs	
L830-5	100w	20a / 6.6a	AL-130-0044	8.5 lbs	
L830-18	150w	6.6a / 6.6a	AL-130-0045	8.5 lbs	
L830-19	150w	20a / 6.6a	AL-130-0046	8.5 lbs	
L830-6	200w	6.6a / 6.6a	AL-130-0047	10.3 lbs	
L830-7	200w	20a / 6.6a	AL-130-0048	10.3 lbs	
L830-10	300w	6.6a / 6.6a	AL-130-0049	11.5 lbs	
L830-11	300w	20a / 6.6a	AL-130-0050	12.5 lbs	
L830-9	300w	20a / 20a	AL-130-0051	12.5 lbs	
L830-14	500w	6.6a / 6.6a	AL-130-0052	18.5 lbs	
L830-15	500w	20a / 6.6a	AL-130-0053	18.5 lbs	
L830-13	500w	20a / 20a	AL-130-0054	18.5 lbs	

Manairco, Inc. Max Power Constant Current Regulators

Regulators Manairco, Inc. Max Power Constant Current Regulators For Airport Lighting (FAA L-828 & L-829) These top of the line regulators are built by a company with over 50 years of manufacturing experience in the airport and heliport lighting field. They are designed and manufactured in accordance with FAA Circular AC 150/5345-20G. Prior to sale and installation, industry experts put all regulators through a series of rigorous testing.

FAA L-827 MONITOR

Description	Catalog No.*	Class	Style*
For 2.5 KW Regulator	MRML82738-01	1	1
For 7.5 KW Regulator	MRML82738-02	1	1
For 10 KW Regulator	MRML82738-03	1	1
For 15 KW Regulator	MRML82738-04	1	1
For 20 KW Regulator	MRML82738-05	1	1
For 30 KW Regulator	MRML82738-06	1	1
For 50 KW Regulator	MRML82738-07	2	2
For 60 KW Regulator	MRML82738-08	2	2

REMARKS - For adding to 3 step regulator  
For Style 2, 6 Step Regulator, change 01 to 02 in Catalog No.  
CONSTANT CURRENT REGULATOR OPTIONAL EQUIPMENT:  
FAA L-827 Monitor with regulator change catalog L-828 to L-829

Call for Pricing



Obstruction Lighting

Genesis Lamp carries a complete line of obstruction lighting products. Obstruction lighting products are classified in three categories; Low medium and high intensity obstruction lighting.

We supply replacement flash tubes for H&P (Hughey Phillips), Flash Technology Systems, TWR Lighting Systems, EG&G StrobeGuard Systems and Dialight.

Genesis Lamp is one of the few manufacturers capable of producing quality obstruction strobe lights. At Genesis Lamp we have been manufacturing obstruction strobe lights for over 30 years.



Heliport Lighting

Genesis Lamp offers a full line of Heliport lighting landing equipment and heliport lighting systems. Our line of heliport lights including perimeter lights, obstruction lights, floodlights, beacons and lighted wind cones. Our lights are offered with incandescent bulbs and now the LED light bulb versions are available.

Types of Heliport Lighting

- FATO Perimeter Lights  
Final Approach & Takeoff Area (FATO)
- TLOF Touchdown Lights  
Touchdown and Lift-off Area (TLOF)
- Landing Direction Lights
- Floodlights
- Lighted Wind Cones
- Heliport Beacons
- Heliport Lighting Controllers



Obstruction Lighting Fixtures & Hardware



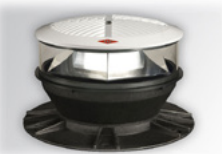
FlashGuard™ 3000



L-810 LED  
Single



L-810 LED SPECTRA  
Double



HORIZON™ AC Series



DuroSite™ LED Visual Signal Lights



Control and Monitoring Systems



Vigilant LED Based L-810





## Genesis Lamp - Your Source for Airport Lighting

Genesis Lamp is an leading supplier of airport lighting systems. Our expansive inventory includes: airport lamps, taxiway lighting, approach & threshold lighting, runway lighting, and a wide variety of essential airport and airfield lighting products. In order to be the best in the airport lighting industry, we believe in supplying the best. In this vein, we manufacture the highest quality aviation lighting & airfield light bulbs. Genesis Lamp Corporation specializes in selling only the highest quality airport lighting bulbs, fixtures and systems.

Genesis Lamp continues to light the way for US and international airports. Our manufacturing and distribution capabilities allow us to supply virtually every type of lamp in any volume to national and international destinations. Airports large and small have been made safer through the use of our airfield lighting products.

**Airport Light Bulbs**

**Approach & Threshold Lighting**

**Runway Lighting**

**Taxiway Lighting**

**Solar Airport Lighting**

**Transformers & Regulators**

**Windsocks & Cones**

**Glass Runway Lenses**

**Cables & Connectors**

**In Pavement Lighting**

**Elevated Lighting**

**Approach Lighting**

**Cables & Connectors**

**Guidance Signs**

**Power Equipment**

**Navigational Aids**

**Base Plates & Cans**

**PAPI Lighting Systems**

**Order online at: [www.GenesisLamp.com](http://www.GenesisLamp.com)**